

LYCÉE LE PARACLET QUIMPER

La classe de première arts appliqués a travaillé sur les effets et les impacts du réchauffement climatique.

Les élèves se sont projetés dans le futur en s'appuyant sur des données scientifiques actuelles. Ils ont par la suite proposé des productions plastiques autour de leurs questionnements.



Pourquoi les coraux?

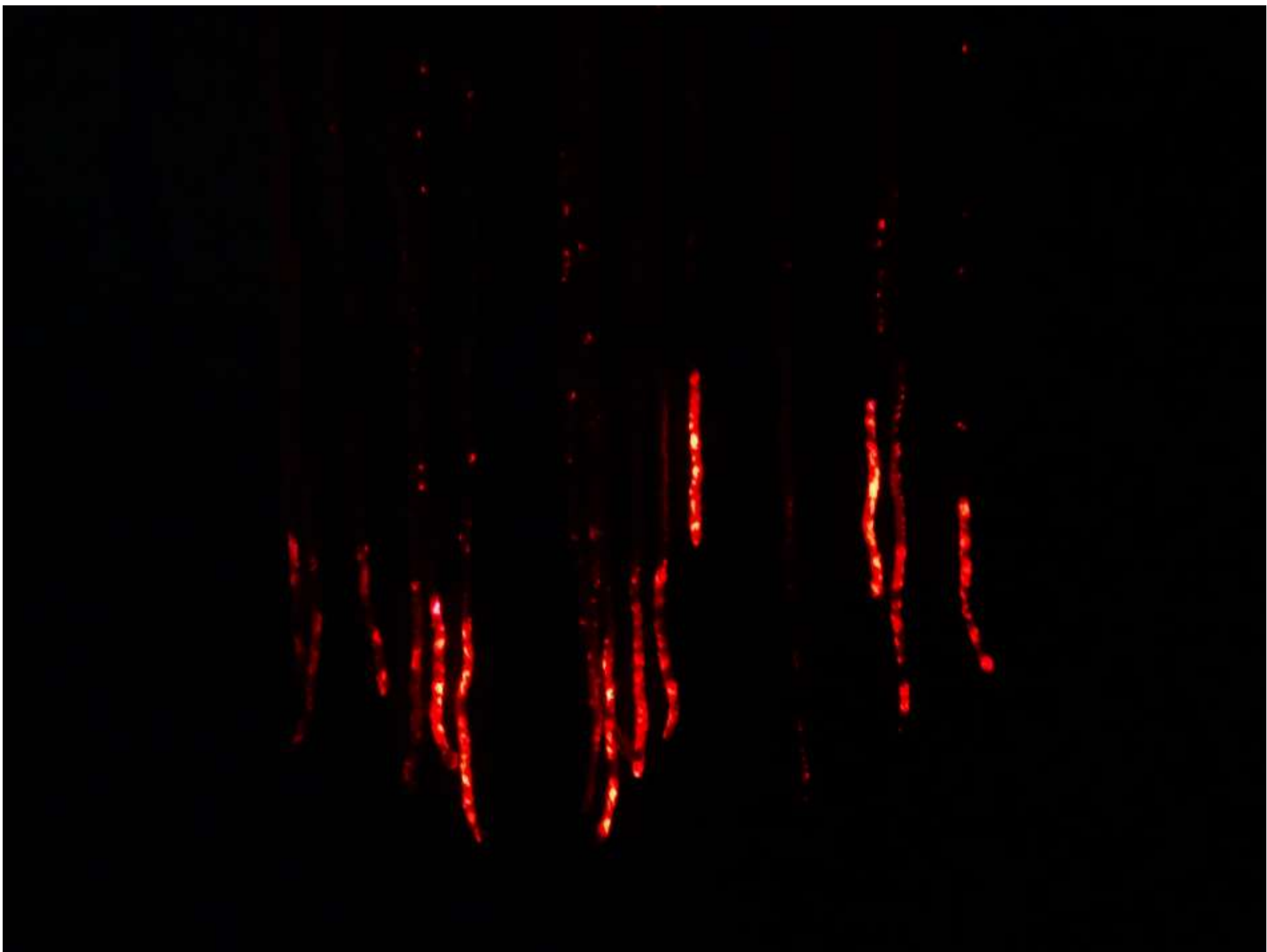
Les impacts du changement climatique sur la faune et la flore.

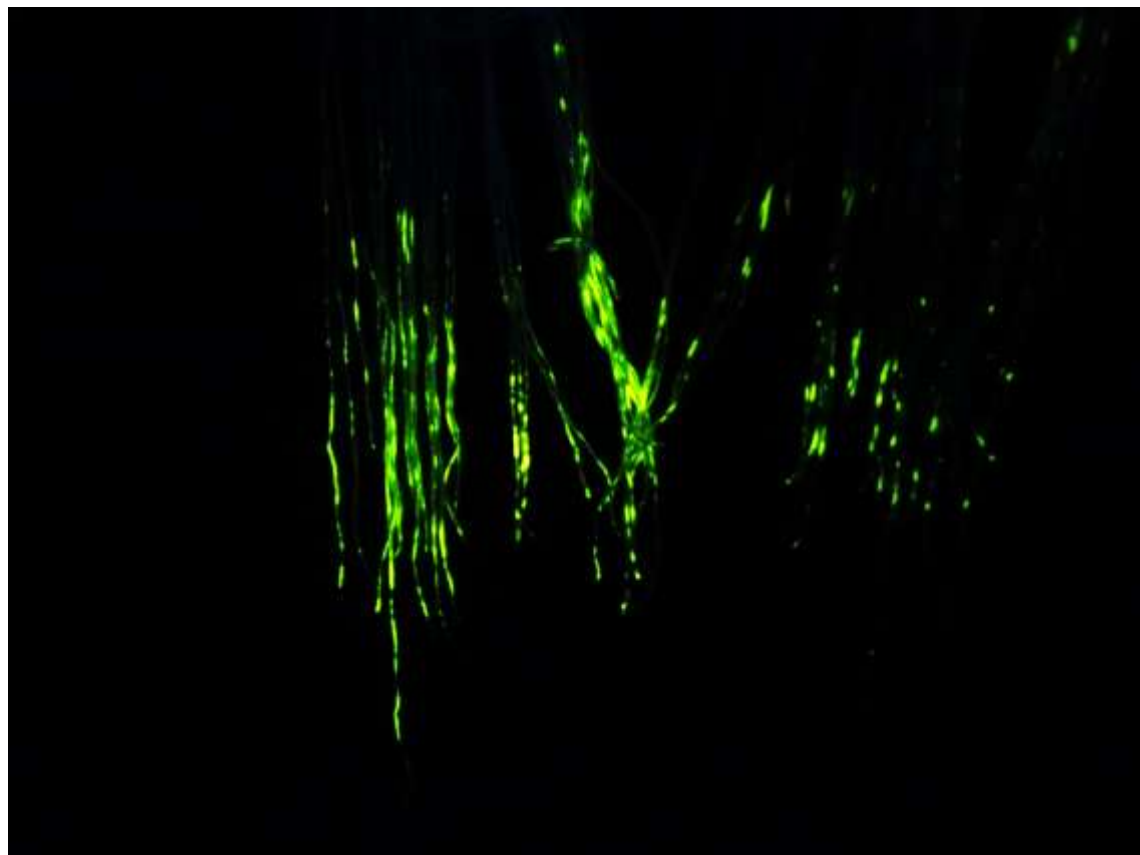
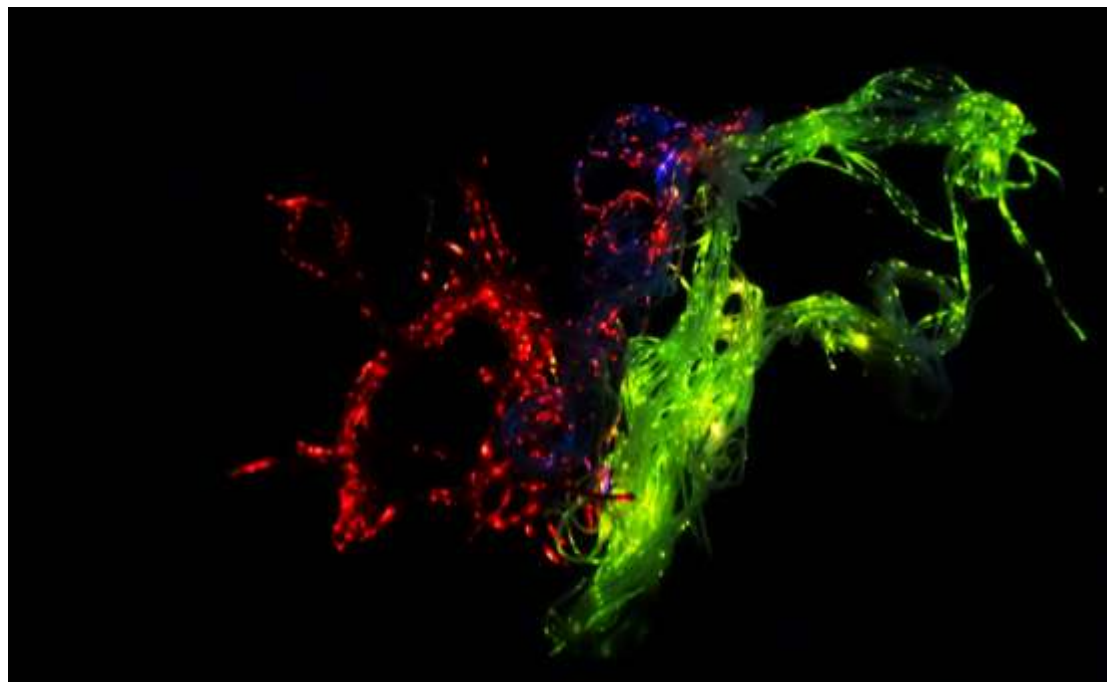
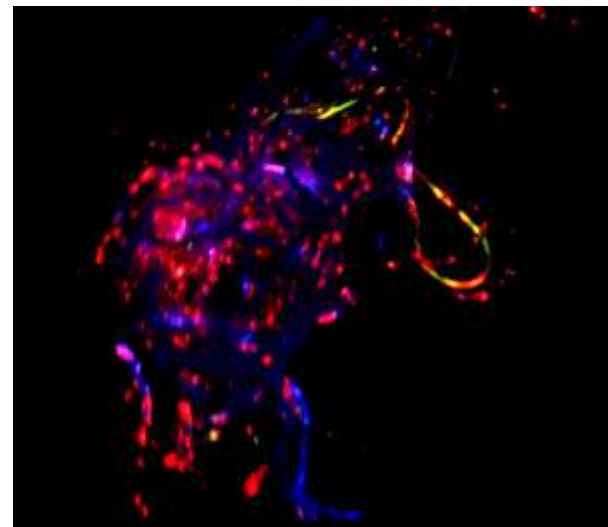
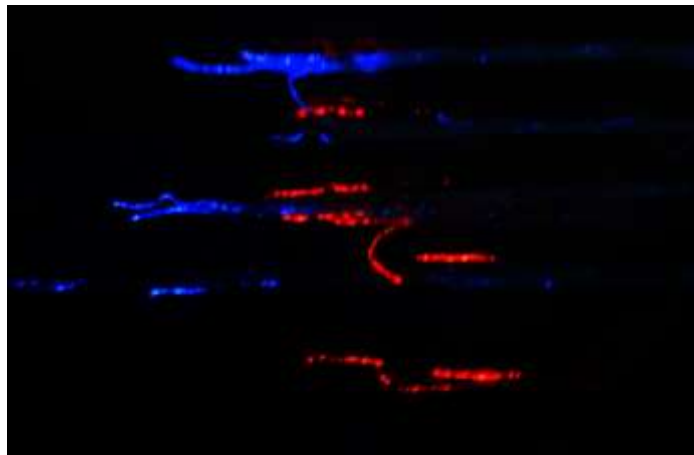
Comment sensibler...

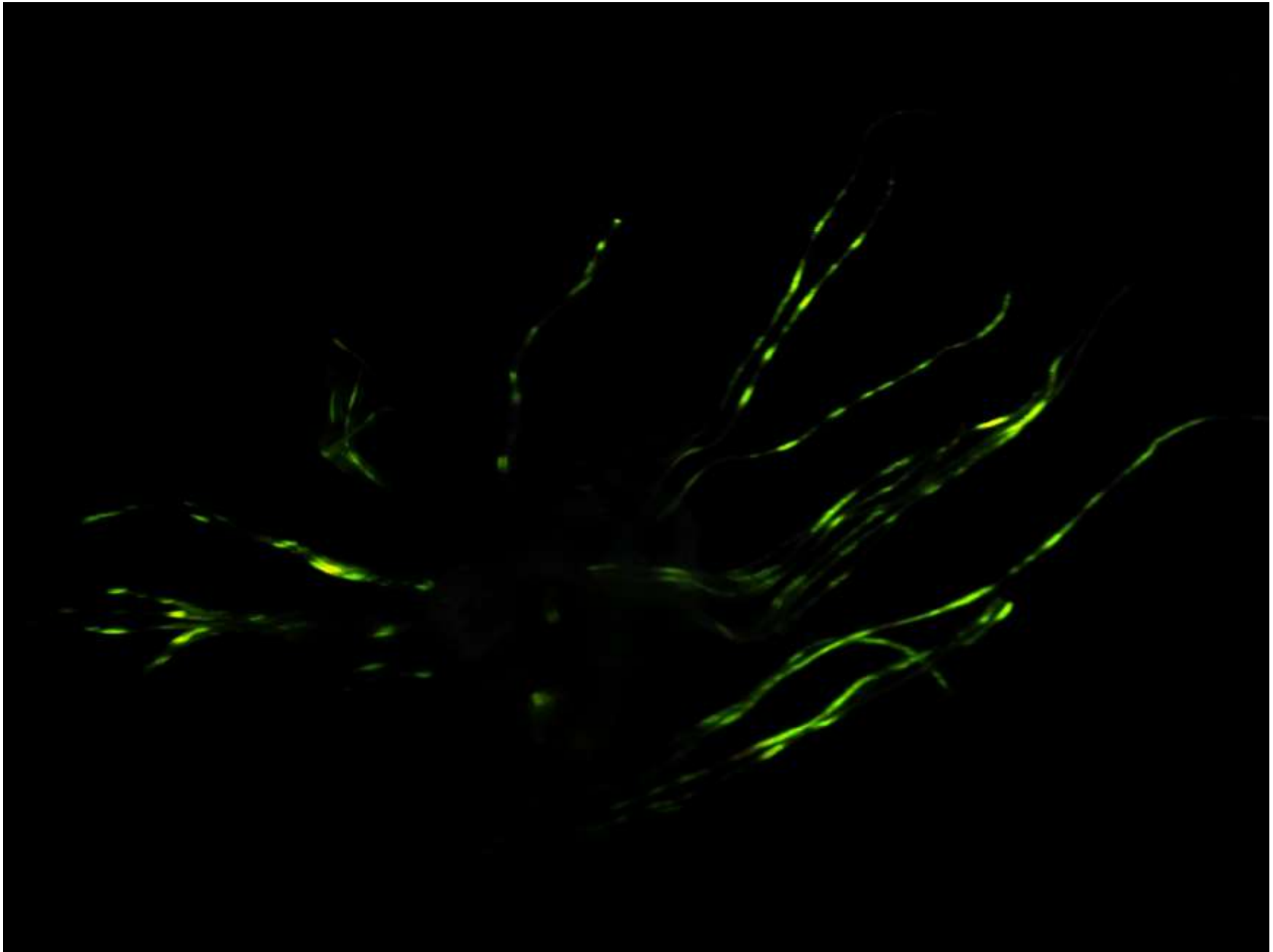


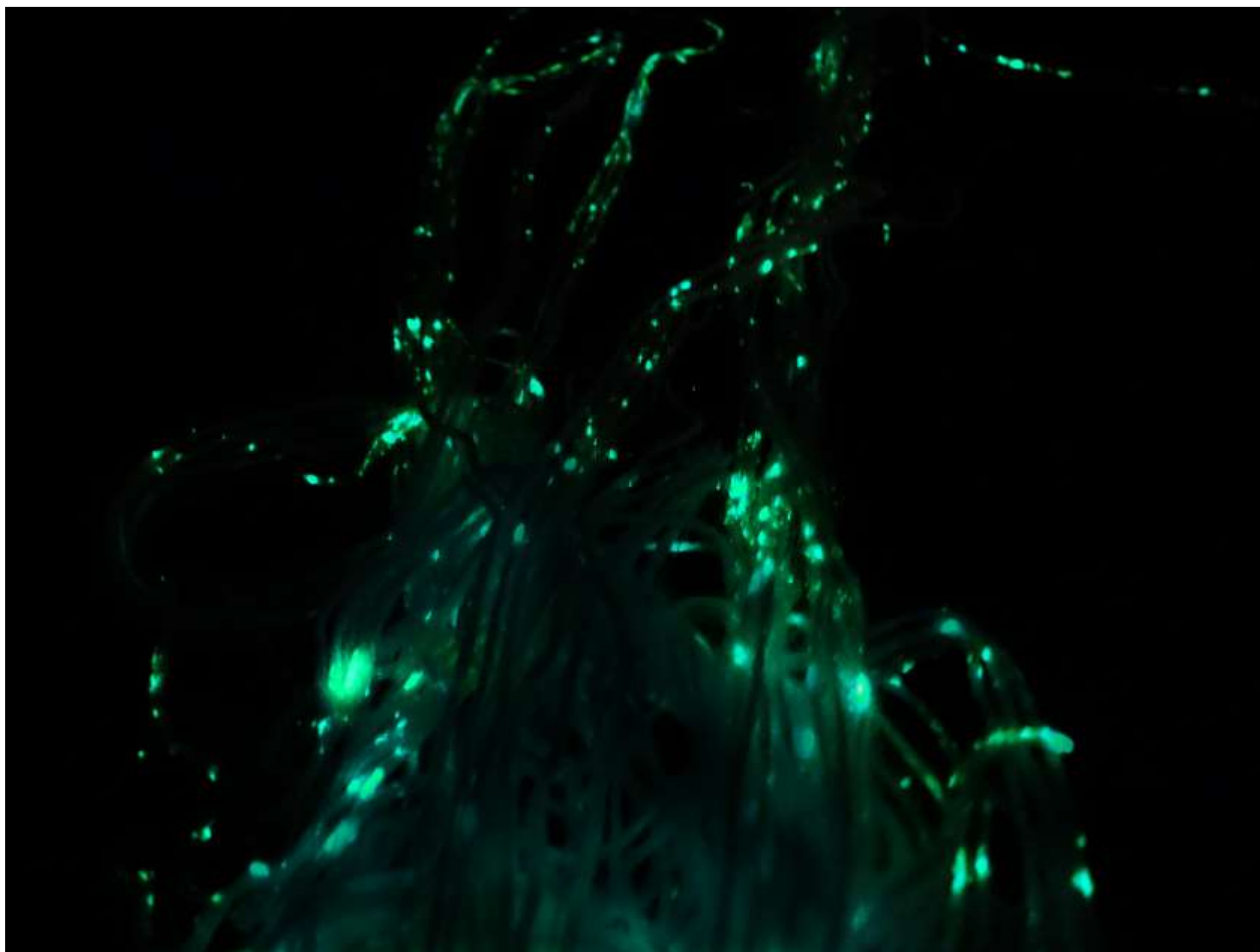
Projet photo







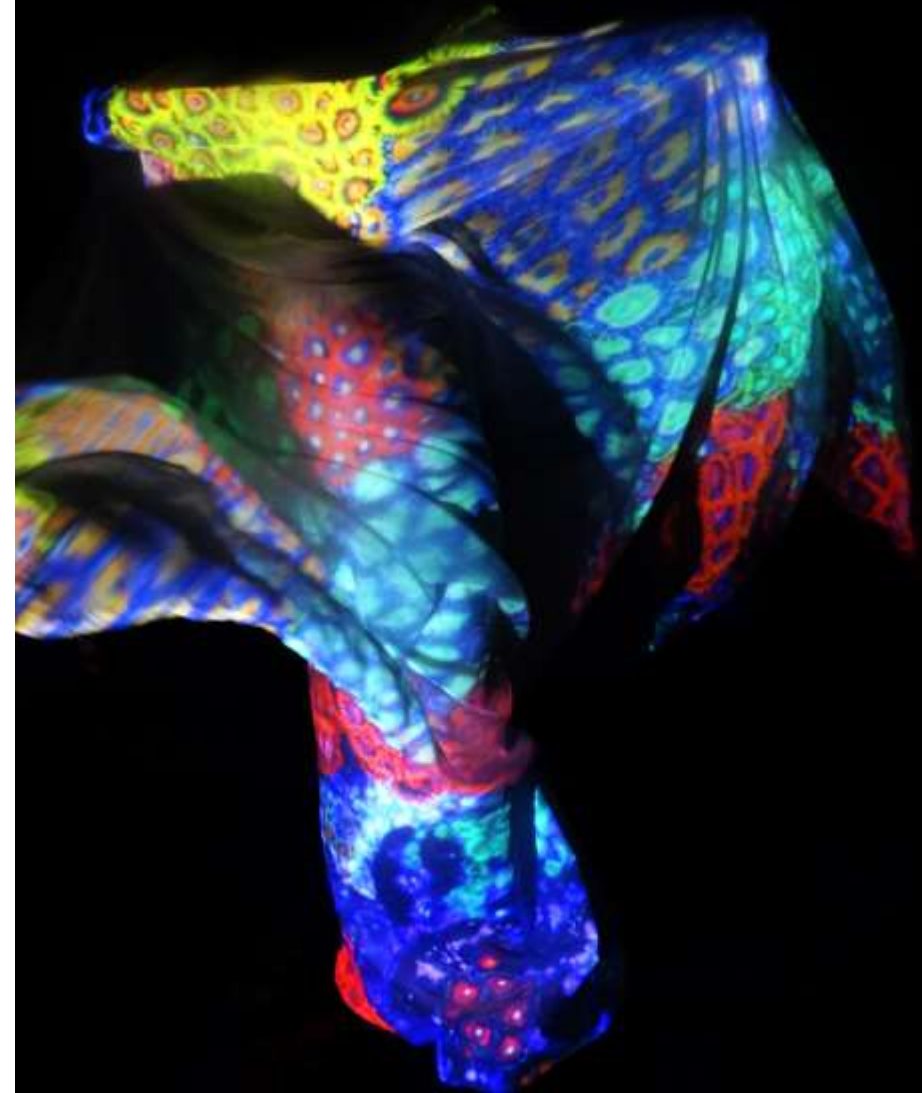


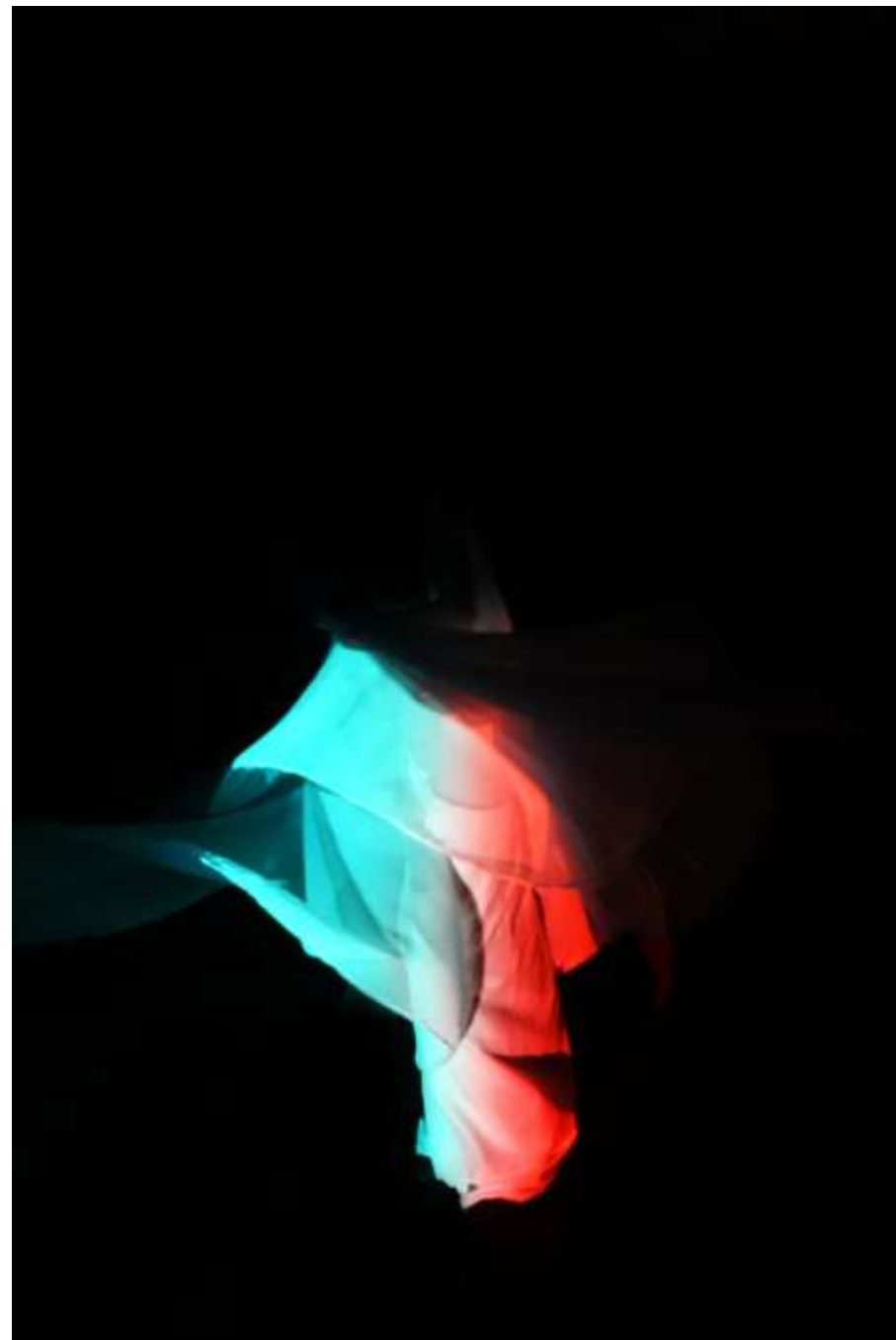
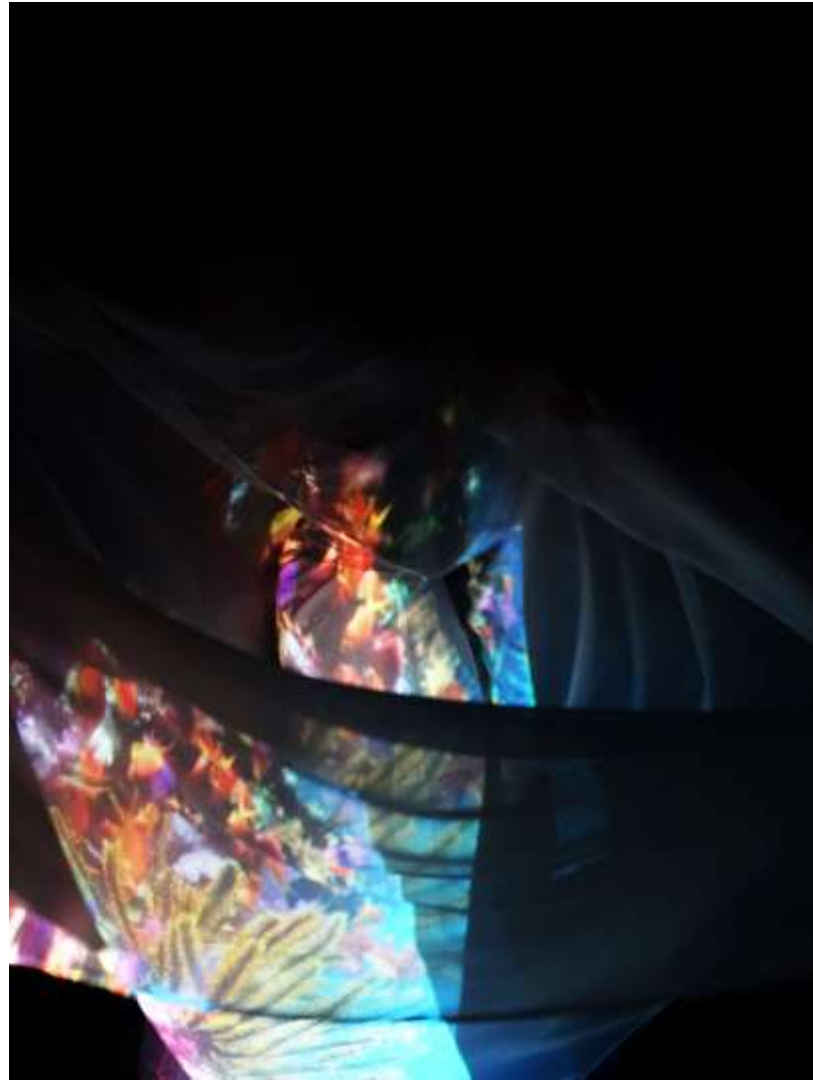
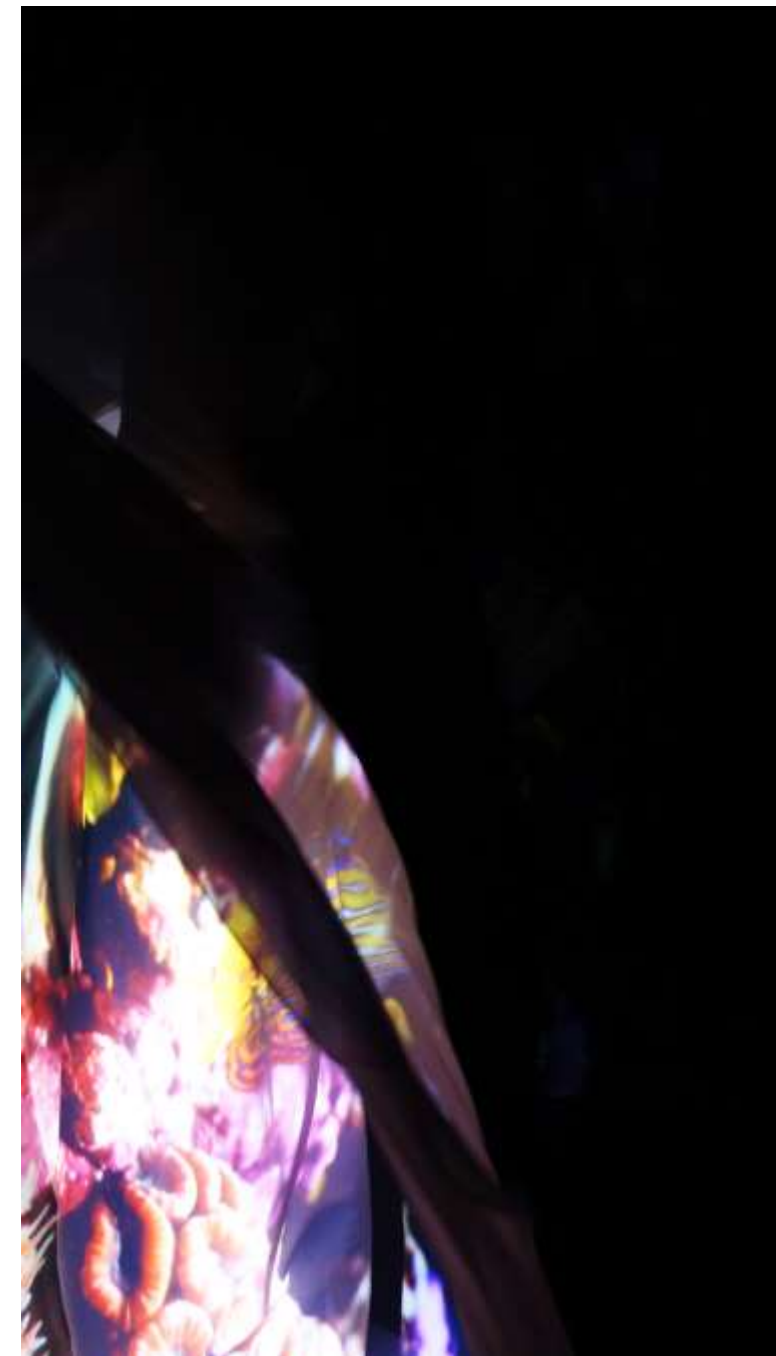




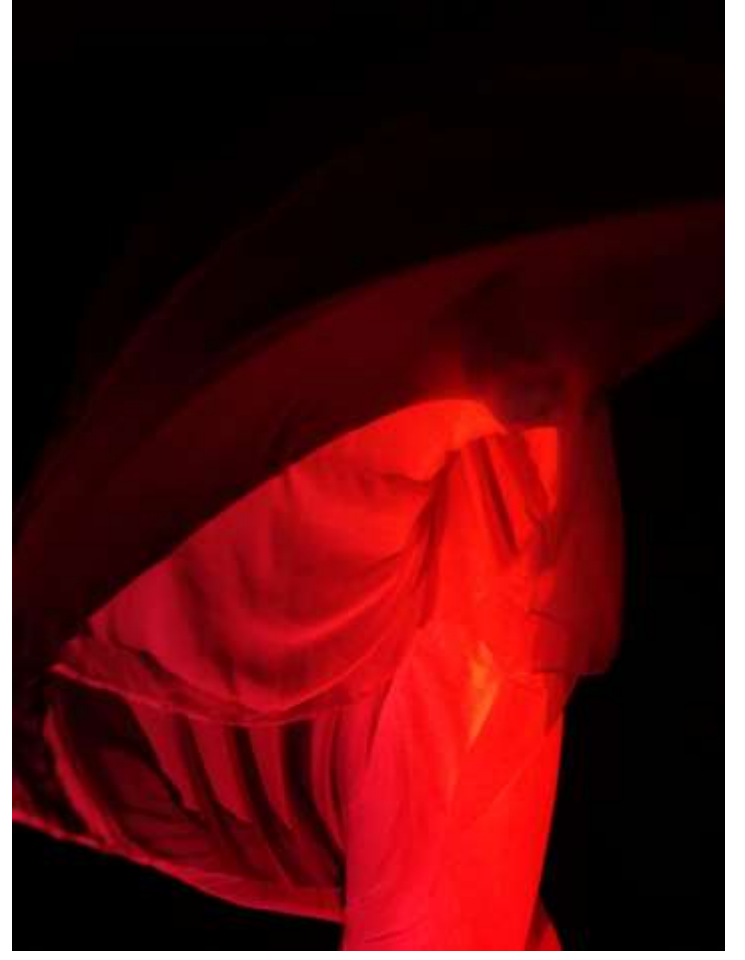


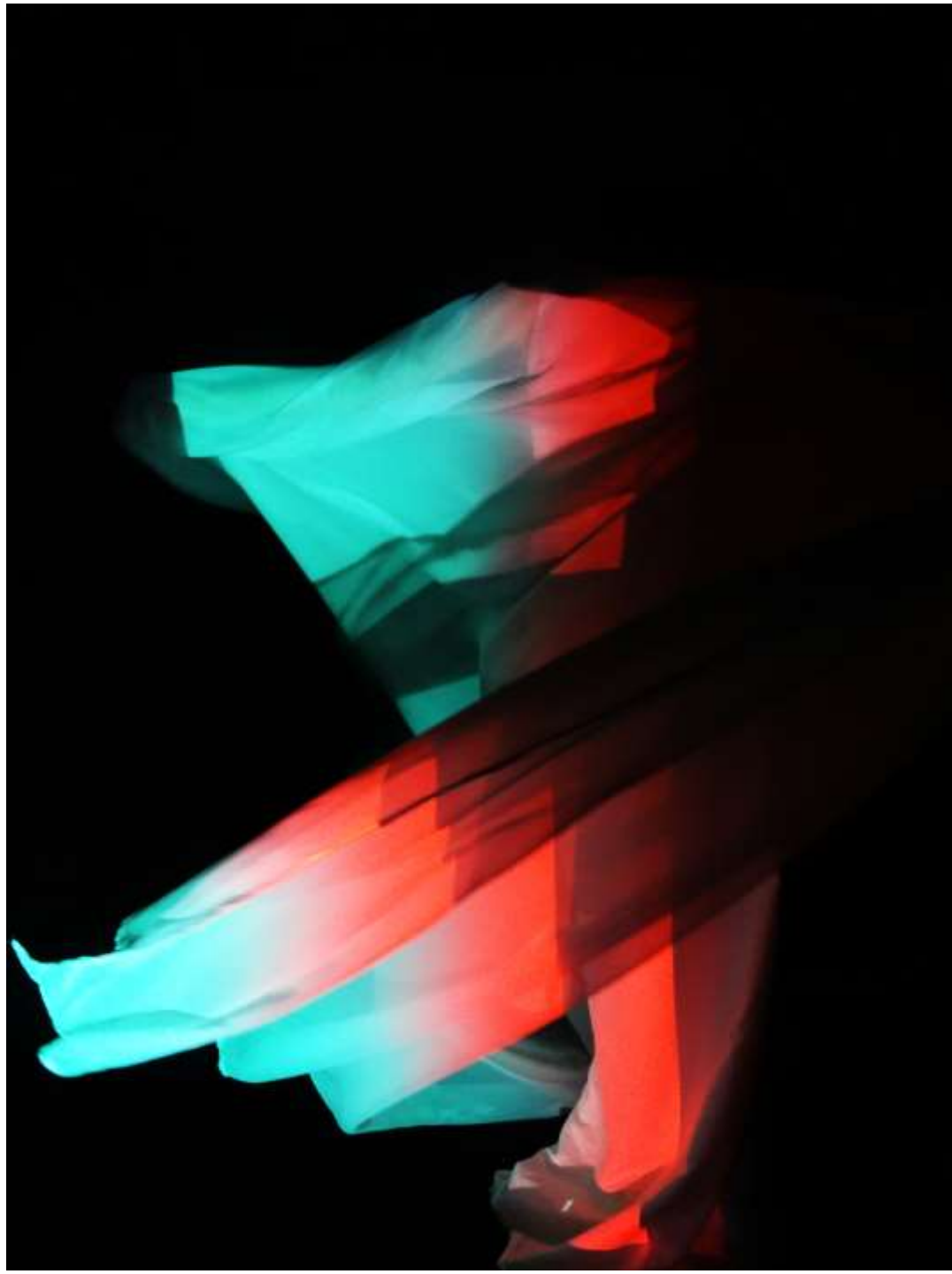










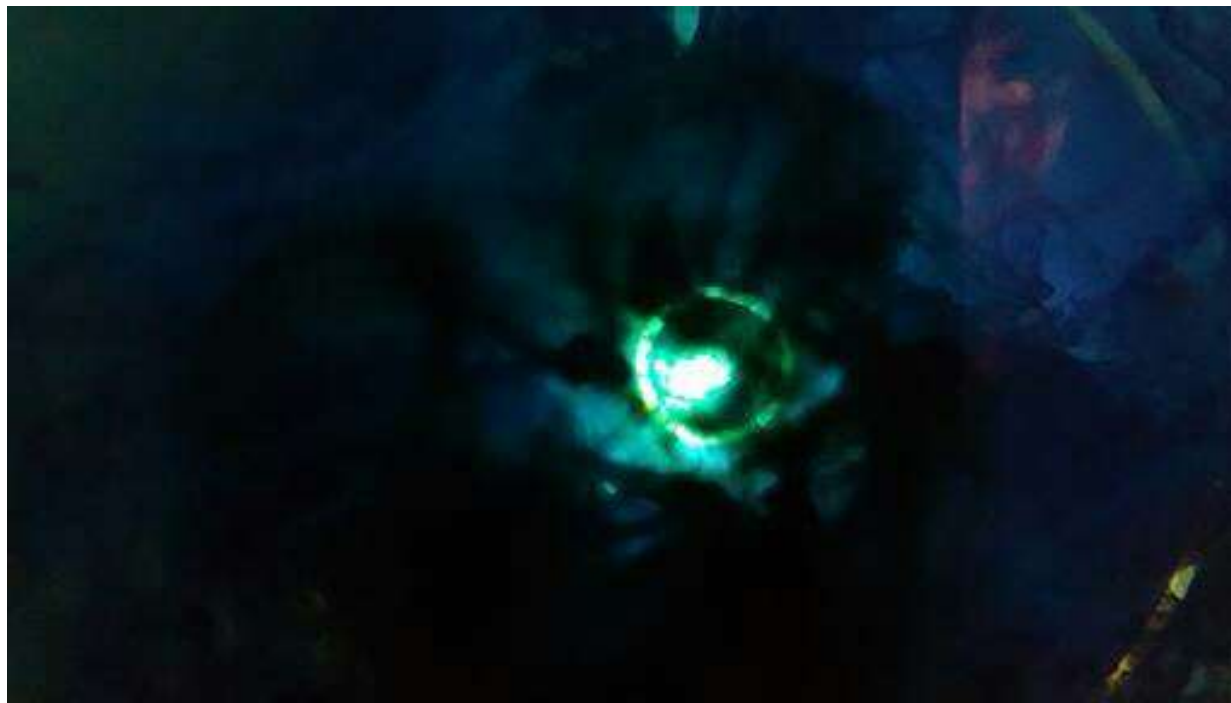




Les Abysses



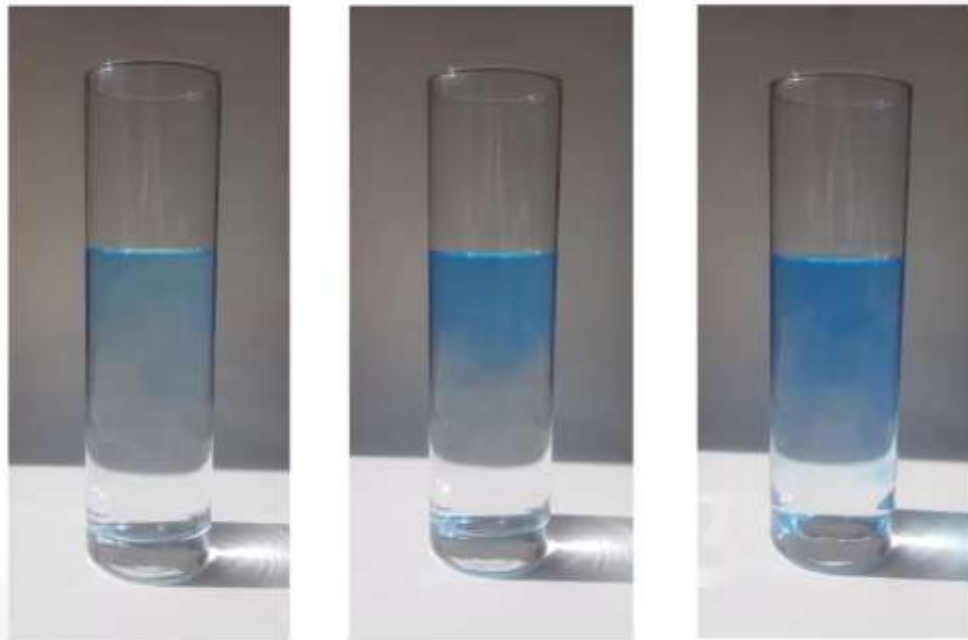




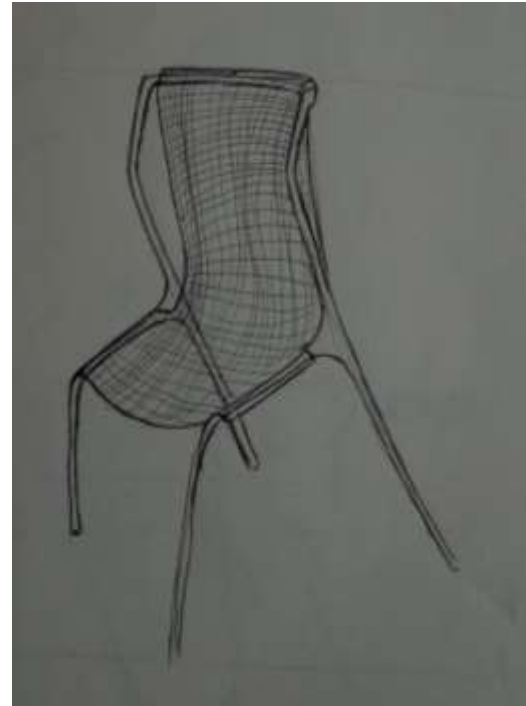
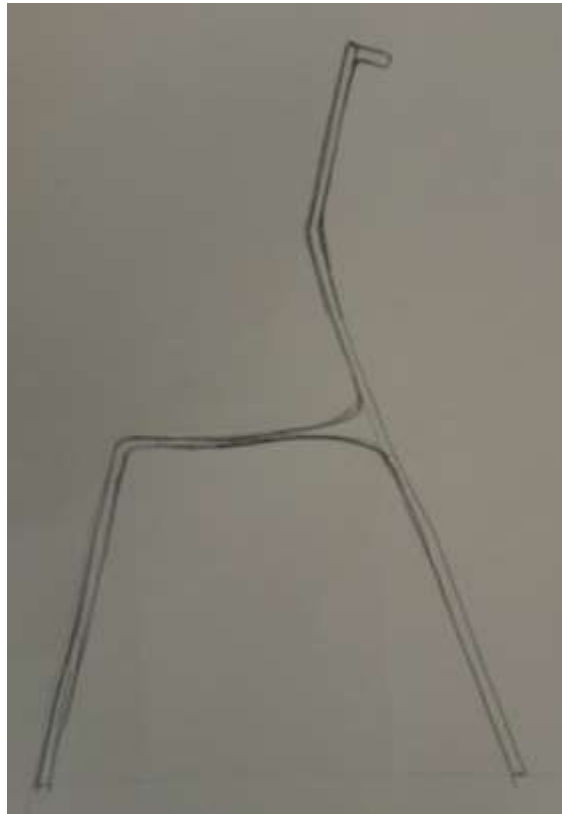
Flip book de Bérénice



Projet de Raphaël



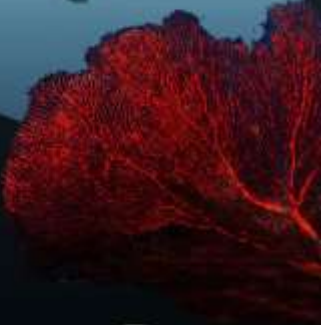
Chaise aux allures de requins



En tissu



En grillage



En tissu élastique



Fabrication

